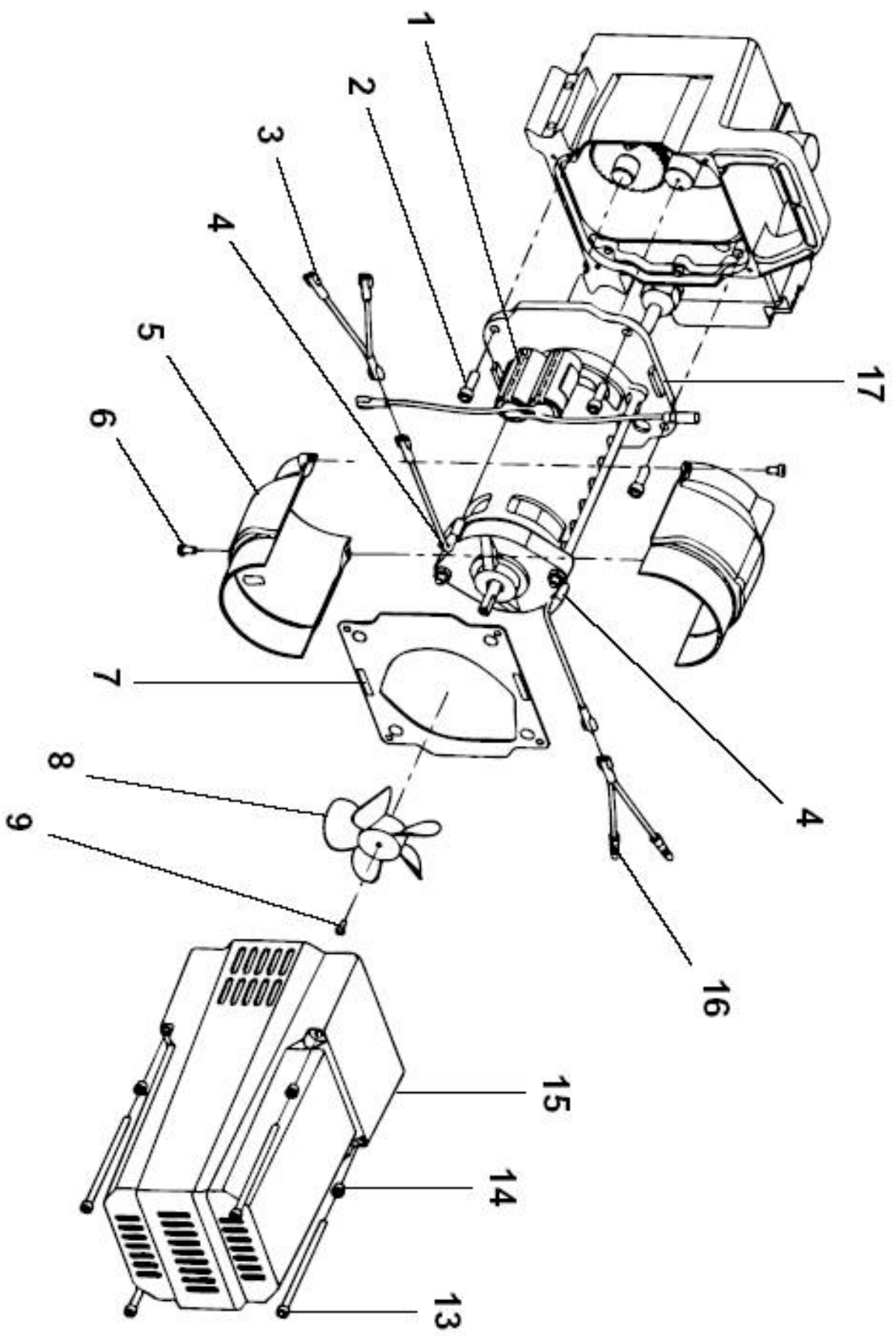


12.3 Spare parts list for color section

(spare parts diagram, see Page 106)

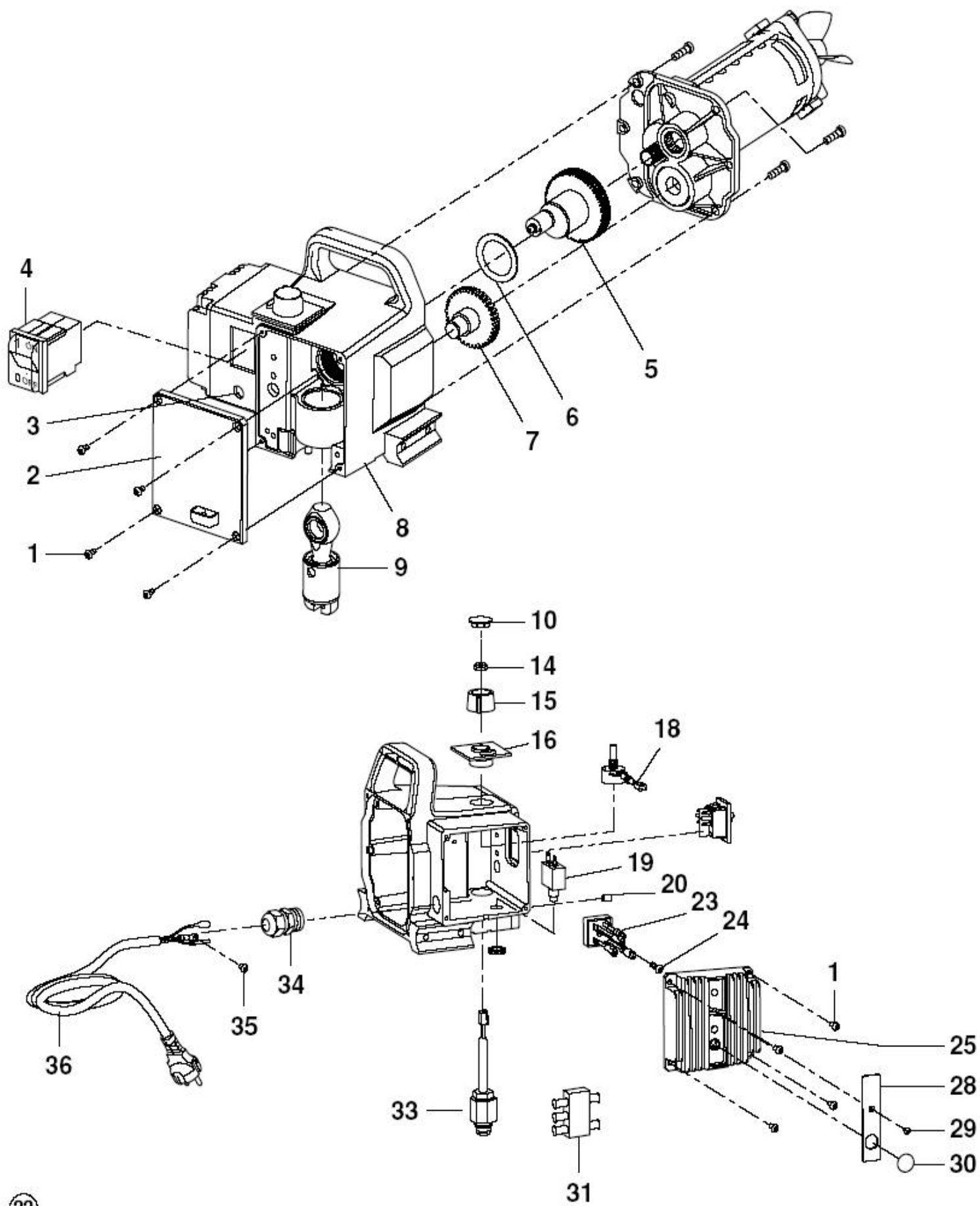
Item	Order No.	Description
1	0034 041	Transition socket M 16 x 1.5
2	0340 256	Manometer combination
3	3505 045	Double socket
4	0508 689	Paint section housing
5	0507 517	Sealing stopper
6	0508 666*	Upper packing
7	0508 665*	Piston guide
8	0508 664	Guide nut
10	0508 604	O-ring
11	0508 749	Bearing spring
12	0508 603	Bearing ring
13	0508 449	Filter cartridge, 30 meshes
	0508 748	Filter cartridge, 60 meshes (standard equipment)
	0508 450	Filter cartridge, 100 meshes
14	0508 602	Conical spring
15	0508 601	Filter housing
18	0508 212	Relief valve
19	0507 745	Seal
20	0508 683	Drive ring
21	0508 744	Relief valve grip
22	0508 745	Grooved pin
23	0508 684	Double nipple
27	0508 690	Inlet valve housing (unit with high carriage)
	0508 680	Inlet valve housing (unit with low carriage)
28	3500 203*	O-ring
29	0508 679	Inlet valve seat
30	0508 678*	Inlet valve ball
31	0508 677	Lower ball guide
32	0508 739*	Lower seal
33	0508 676	Bushing
34	0508 211	Piston (Item 35 -> 41)
35	0508 675	Outlet valve housing
36	0508 674*	O-ring
37	0508 673	Outlet valve seat
38	0508 672*	Outlet valve ball
39	0508 671	Upper ball guide
40	0508 670*	Upper seal
41	0508 669	Piston
42	0508 668*	Lower packing (2)
43	0508 553	Cylinder head screw (2)
	0508 214*	Service set packings with machine grease and installation tool
	0508 619	118 ml separating oil (prevents increased wear and tear to the packings)
	0508 620	118 ml cleaner (for the color section interior)
	9984 507	High-pressure hose DN 6 mm, 15 m



12.4 Spare parts list for motor

(spare parts diagram, see Page 107)

Item	Order No.	Description
1	0508 643	Capacitor-rectifier set (230 V AC, 50 Hz)
2	0508 559	Cylinder head screw (4)
3	0508 644	Stranded wires (black)
4	0508 645	Carbon brush set
5	0508 646	Shell
6	9802 891	Screw (2)
7	0508 562	Seal
8	0508 648	Ventilator
9	0508 649	Screw
13	0508 563	Screw (4)
14	0508 564	Rubber socket
15	0508 688	Motor cover
16	0508 650	Stranded wires (red)
17	0508 215	Motor (230 V AC, 50 Hz)



12.2 Spare parts list for gear unit housing

(spare parts diagram, see Page 105)

Item Order No.	Description	Item Order No.	Description
1	0508 571 Screw	20	0508 581 Screw
2	0508 570 Front cover	23	0508 643 Capacitor-rectifier set (230 V AC, 50 Hz) with item 24
3	----- Indicating light	24	9802 244 Screw
4	9850 936 ON/OFF switch (230 V AC, 50 Hz)	25	0508 656 Electronic pressure adjuster (with item 28, 29, 30)
5	0508 572 Crankshaft	28	0508 621 Cover, LED
6	0508 573 Thrust ring	29	0508 657 Screw
7	0507 938 Gearwheel, Stage 2	30	0507 751 Sealing cap
8	0508 200 Gear unit housing	31	0508 658 Interference suppressor module
9	0508 208 Connecting rod	33	0508 654 Pressure sensor
10	0507 748 Sealing cap	34	9850 644 Cable threaded joint
14	0507 749 Nut	35	9800 340 Screw
15	0507 740 Pressure regulator knob	36	0261 352 Unit connecting line H07RN-F3 G 1.5 – 6 m
16	0508 575 Disc for potentiometer		
18	0507 973 Potentiometer		
19	0508 580 Excess-current circuit breaker		